

**OKALOOSA COUNTY  
EMERGENCY MEDICAL SERVICES  
STANDARD OPERATING PROCEDURE**

---

<b>Title:</b>	<b>Organizational Structure</b>
<b>Policy:</b>	<b>102.00</b>
<b>Purpose:</b>	<b>To provide EMS employees with a clear understanding of responsibility, authority, and chain of command for all functions within the organization.</b>

---

**Division Structure**

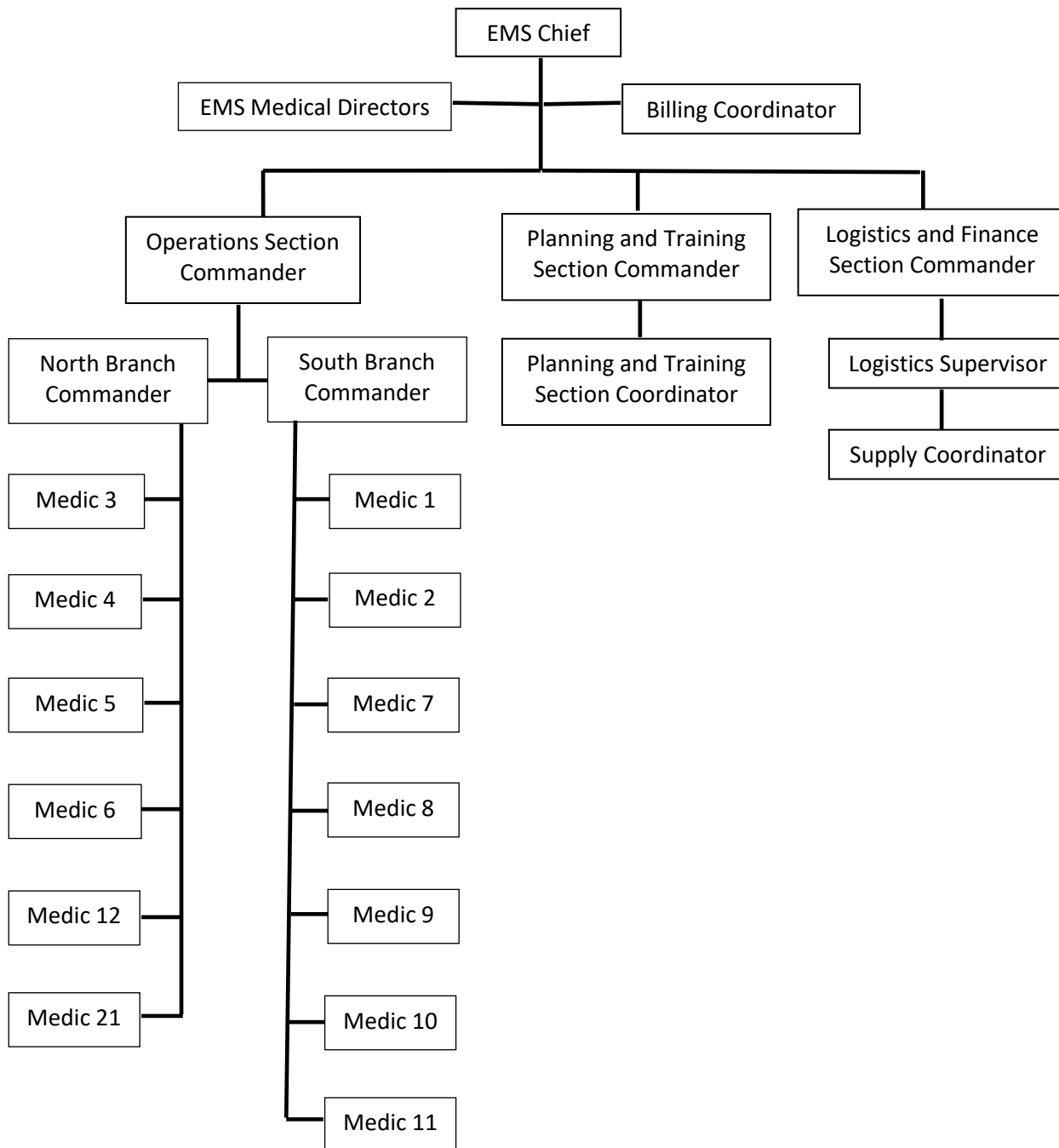
The Okaloosa County EMS Division structure is as follows: EMS Division Chief, Program Technician (Billing Coordinator), 1 Operations Section Commander, 1 Planning and Training Section Commander, 1 Logistics and Finance Section Commander, 8 Branch Commanders, 40 full-time Paramedics, 40 full-time Emergency Medical Technicians (EMTs), 24 relief Paramedics, 24 relief EMTs, an EMS Supply and Logistics Supervisor, a Supply Coordinator, and a Planning and Training Section Coordinator. The EMS Division operates twelve (12) Advanced Life Support (ALS) ambulances working on rotating 12 hour periods. The Medic Units are posted throughout the county and respond to emergency and non-emergency transport of patients to medical facilities within and bordering Okaloosa County.

**Legislative Requirements**

Florida Statutes Chapter 125.01 (e) gives the governing body of the county the power to provide ambulance service. This Division is authorized by the Board of County Commissioners under County Ordinance 93-45, and regulated by Florida Statutes Chapter 401 and Florida Administrative Code Chapter 64J.

**Organization Chart:** Next Page

**OKALOOSA COUNTY  
EMERGENCY MEDICAL SERVICES  
STANDARD OPERATING PROCEDURE**



Policy #: 102.00  
 CAAS: 101.02.01  
 Author: Welborn  
 Reviewed: Leadership  
 Approved: Leadership  
 Status: Active  
 Effective Date: 02/22/16  
 Revision Date: 06/20/18