



OKALOOSA  
COUNTY

**PROPERTY APPRAISER'S  
SUMMARY OF THE 2011-12 BUDGET BY APPROPRIATION CATEGORY**

**EXHIBIT A**

| APPROPRIATION CATEGORY<br>(1)             | ACTUAL EXPENDITURES<br>2009-10<br>(2) | APPROVED BUDGET<br>2010-11<br>(3) | ACTUAL EXPENDITURES<br>03/31/11<br>(4) | REQUEST<br>2011-12<br>(5) | (INCREASE/(DECREASE)) |               | AMOUNT<br>APPROVED<br>2011-12<br>(7) | (INCREASE/(DECREASE)) |           |
|---|---------------------------------------|-----------------------------------|--|---------------------------|-----------------------|---------------|--------------------------------------|-----------------------|-----------|
|   |                                       |                                   |  |                           | AMOUNT<br>(6)         | %<br>(6a)     |                                      | AMOUNT<br>(8)         | %<br>(8a) |
| PERSONAL SERVICES<br>(Sch. 1-1A)          | \$2,450,226                           | \$2,485,761                       | \$1,153,586                            | \$2,436,709               | (\$49,052)            | -1.97%        |                                      |                       |           |
| OPERATING EXPENSES<br>(Sch. II)           | \$450,110                             | \$507,505                         | \$248,554                              | \$469,077                 | (\$38,428)            | -7.57%        |                                      |                       |           |
| OPERATING CAPITAL<br>OUTLAY<br>(Sch. III) | \$55,141                              | \$30,000                          | \$0                                    | \$0                       | (\$30,000)            | -100.00%      |                                      |                       |           |
| NON-OPERATING<br>(Sch. IV)                |                                       | \$5,000                           |  | \$5,000                   | \$0                   | 0.00%         |                                      |                       |           |
| <b>TOTAL EXPENDITURES</b>                 | <b>\$2,955,477</b>                    | <b>\$3,028,266</b>                | <b>\$1,402,140</b>                     | <b>\$2,910,786</b>        | <b>(\$117,480)</b>    | <b>-3.88%</b> |                                      |                       |           |
| NUMBER OF POSITIONS                       | 39                                    | 39                                |  | 39                        | 0                     | 0.00%         |                                      |                       |           |
|   |                                       |                                   |  |                           | COL (5)-(3)           | COL (6) / (3) |                                      |                       |           |

**OKALOOSA COUNTY**

**DETAIL OF PERSONAL SERVICES**

**SCHEDULE IA**

| OBJECT CODE                           | ACTUAL EXPENDITURES 2009-10 | APPROVED BUDGET 2010-11 | ACTUAL EXPENDITURES 03/31/11 | REQUEST 2011-12 | (INCREASE/(DECREASE)) |         | AMOUNT APPROVED 2011-12 |
|---------------------------------------|-----------------------------|-------------------------|------------------------------|-----------------|-----------------------|---------|-------------------------|
|                                       |                             |                         |                              |                 | AMOUNT                | %       |                         |
| (1)                                   | (2)                         | (3)                     | (4)                          | (5)             | (6)                   | (6a)    | (7)                     |
| <b>10 PERSONAL SERVICES:</b>          |                             |                         |                              |                 |                       |         |                         |
| <b>11 OFFICIAL</b>                    | \$125,254                   | \$125,108               | \$62,554                     | \$125,108       | \$0                   | 0.00%   | \$0                     |
| <b>12 EMPLOYEES (REGULAR)</b>         | \$1,633,033                 | \$1,652,075             | \$754,321                    | \$1,689,360     | \$37,285              | 2.26%   | \$0                     |
| <b>13 EMPLOYEES (TEMPORARY)</b>       | \$6,598                     | \$6,598                 | \$3,299                      | \$6,653         | \$55                  | 0.83%   | \$0                     |
| <b>14 OVERTIME</b>                    | \$0                         | \$0                     | \$0                          | \$0             | \$0                   | 0.00%   | \$0                     |
| <b>15 SPECIAL PAY</b>                 | \$64,194                    | \$11,506                | \$13,159                     | \$10,000        | (\$1,506)             | -13.09% | \$0                     |
| <b>21 F.I.C.A.</b>                    |                             |                         |                              |                 |                       |         |                         |
| 2152 REGULAR 7.65%                    | \$126,893                   | \$136,195               | \$57,332                     | \$138,946       | \$2,751               | 2.02%   | \$0                     |
| 2153 OTHER                            | \$0                         | \$0                     | \$0                          | \$0             | \$0                   | 0.00%   | \$0                     |
| <b>22 RETIREMENT</b>                  |                             |                         |                              |                 |                       |         |                         |
| 2251 OFFICIAL                         | \$14,117                    | \$15,326                | \$7,663                      | \$7,519         | (\$7,807)             | -50.94% | \$0                     |
| 2252 EMPLOYEES                        | \$131,565                   | \$130,456               | \$62,655                     | \$67,173        | (\$63,283)            | -48.51% | \$0                     |
| 2253 SMS/SES                          | \$13,986                    | \$14,353                | \$3,274                      | \$13,099        | (\$1,254)             | -8.74%  | \$0                     |
| 2254 DROP                             | \$33,049                    | \$44,144                | \$20,404                     | \$17,262        | (\$26,882)            | -60.90% | \$0                     |
| <b>23 LIFE &amp; HEALTH INSURANCE</b> | \$271,383                   | \$322,000               | \$140,927                    | \$334,880       | \$12,880              | 4.00%   | \$0                     |
| <b>24 WORKER'S COMPENSATION</b>       | \$30,154                    | \$28,000                | \$27,999                     | \$26,710        | (\$1,290)             | -4.61%  | \$0                     |
| <b>25 UNEMPLOYMENT COMP.</b>          | \$0                         | \$0                     | \$0                          | \$0             | \$0                   | 0.00%   | \$0                     |
| <b>TOTAL PERSONAL SERVICES</b>        | \$2,450,226                 | \$2,485,761             | \$1,153,586                  | \$2,436,709     | (\$49,052)            | -1.97%  | \$0                     |

Post this total to Col. (2) Ex. A

Post this total to Col. (3) Ex. A

Post this total to Col (4) Ex A

Post this total to+E10 Col (5) Ex A

Col. (5) - (3)

Col (6) / (3)

## OKALOOSA COUNTY

## DETAIL OF OPERATING EXPENSES

## SCHEDULE II

| OBJECT CODE                     | ACTUAL<br>EXPENDITURES<br>2009-10 | APPROVED BUDGET<br>2010-11 | ACTUAL<br>EXPENDITURES<br>03/31/11 | REQUEST<br>2011-12 | INCREASE/(DECREASE) |         | AMOUNT<br>APPROVED<br>2011-12 |
|---------------------------------|-----------------------------------|----------------------------|------------------------------------|--------------------|---------------------|---------|-------------------------------|
|                                 |                                   |                            |                                    |                    | AMOUNT              | %       |                               |
| (1)                             | (2)                               | (3)                        | (4)                                | (5)                | (6)                 | (6a)    | (7)                           |
| OPERATING EXPENSES:             |                                   |                            |                                    |                    |                     |         |                               |
| <b>31 PROFESSIONAL SERVICES</b> |                                   |                            |                                    |                    |                     |         |                               |
| 3151 E.D.P.                     | \$147,285                         | \$152,585                  | \$76,318                           | \$148,888          | (\$3,697)           | -2.42%  | \$0                           |
| 3152 APPRAISAL                  | \$0                               | \$0                        | \$0                                | \$0                | \$0                 | 0.00%   | \$0                           |
| 3153 MAPPING                    | \$0                               | \$0                        | \$0                                | \$0                | \$0                 | 0.00%   | \$0                           |
| 3154 LEGAL                      | \$42,432                          | \$76,750                   | \$19,198                           | \$79,500           | \$2,750             | 3.58%   | \$0                           |
| 3159 OTHER                      | \$3,077                           | \$1,820                    | \$2,271                            | \$950              | (\$870)             | -47.80% | \$0                           |
| 32 ACCOUNTING & AUDIT           | \$5,125                           | \$5,500                    | \$4,975                            | \$5,100            | (\$400)             | -7.27%  | \$0                           |
| 33 COURT REPORTER               | \$0                               | \$0                        | \$0                                | \$0                | \$0                 | 0.00%   | \$0                           |
| 34 OTHER CONTRACTUAL            | \$185                             | \$1,444                    | \$74                               | \$1,444            | \$0                 | 0.00%   | \$0                           |
| 40 TRAVEL                       | \$10,077                          | \$16,641                   | \$8,943                            | \$16,562           | (\$79)              | -0.47%  | \$0                           |
| 41 COMMUNICATIONS               | \$4,784                           | \$4,980                    | \$1,489                            | \$6,800            | \$1,820             | 36.55%  | \$0                           |
| <b>42 TRANSPORTATION</b>        |                                   |                            |                                    |                    |                     |         |                               |
| 4251 POSTAGE                    | \$12,043                          | \$12,795                   | \$47                               | \$11,696           | (\$1,099)           | -8.59%  | \$0                           |
| 4252 FREIGHT                    | \$0                               | \$0                        | \$0                                | \$0                | \$0                 | 0.00%   | \$0                           |
| 43 UTILITIES                    | \$0                               | \$0                        | \$0                                | \$0                | \$0                 | 0.00%   | \$0                           |
| <b>44 RENTALS AND LEASES</b>    |                                   |                            |                                    |                    |                     |         |                               |
| 4451 OFFICE EQUIPMENT           | \$1,918                           | \$2,500                    | \$1,113                            | \$2,607            | \$107               | 4.28%   | \$0                           |
| 4452 VEHICLES                   | \$0                               | \$0                        | \$434                              | \$0                | \$0                 | 0.00%   | \$0                           |
| 4453 OFFICE SPACE               | \$0                               | \$0                        | \$0                                | \$0                | \$0                 | 0.00%   | \$0                           |
| 4454 EDP                        | \$0                               | \$0                        | \$0                                | \$0                | \$0                 | 0.00%   | \$0                           |
| 45 INSURANCE AND SURETY         | \$64,142                          | \$64,344                   | \$64,344                           | \$45,770           | (\$18,574)          | -28.87% | \$0                           |

## OKALOOSA COUNTY

## DETAIL OF OPERATING EXPENSES (CONT.)

## SCHEDULE II

| OBJECT CODE                        | ACTUAL<br>EXPENDITURES<br>2009-10    | APPROVED BUDGET<br>2010-11           | ACTUAL<br>EXPENDITURES<br>03/31/11   | REQUEST<br>2011-12                   | INCREASE/(DECREASE) |                | AMOUNT<br>APPROVED<br>2011-12 |
|------------------------------------|--------------------------------------|--------------------------------------|--------------------------------------|--------------------------------------|---------------------|----------------|-------------------------------|
|                                    |                                      |                                      |                                      |                                      | AMOUNT              | %              |                               |
| (1)                                | (2)                                  | (3)                                  | (4)                                  | (5)                                  | (6)                 | (6a)           | (7)                           |
| <b>46 REPAIR AND MAINTENANCE</b>   |                                      |                                      |                                      |                                      |                     |                |                               |
| 4651 OFFICE EQUIPMENT              | \$1,829                              | \$3,275                              | \$295                                | \$2,850                              | (\$425)             | -12.98%        | \$0                           |
| 4652 VEHICLES                      | \$9,762                              | \$14,625                             | \$3,359                              | \$12,785                             | (\$1,840)           | -12.58%        | \$0                           |
| 4653 OFFICE SPACE                  | \$19,591                             | \$12,260                             | \$5,928                              | \$12,020                             | (\$240)             | -1.96%         | \$0                           |
| 4654 EDP                           | \$20,215                             | \$27,513                             | \$4,017                              | \$27,410                             | (\$103)             | -0.37%         | \$0                           |
| <b>47 PRINTING AND BINDING</b>     | \$8,975                              | \$7,750                              | \$1,961                              | \$6,225                              | (\$1,525)           | -19.68%        | \$0                           |
| <b>49 OTHER CURRENT CHARGES</b>    |                                      |                                      |                                      |                                      |                     |                |                               |
| 4951 LEGAL ADVERTISEMENTS          | \$6,670                              | \$7,350                              | \$6,643                              | \$6,800                              | (\$550)             | -7.48%         | \$0                           |
| 4952 AERIAL PHOTOS                 | \$0                                  | \$0                                  | \$0                                  | \$0                                  | \$0                 | 0.00%          | \$0                           |
| 4959 OTHER                         | \$874                                | \$1,000                              | \$239                                | \$750                                | (\$250)             | -25.00%        | \$0                           |
| <b>51 OFFICE SUPPLIES</b>          | \$45,289                             | \$44,621                             | \$19,583                             | \$27,265                             | (\$17,356)          | -38.90%        | \$0                           |
| <b>52 OPERATING SUPPLES</b>        | \$17,968                             | \$22,000                             | \$8,574                              | \$28,000                             | \$6,000             | 27.27%         | \$0                           |
| <b>54 BOOKS &amp; PUBLICATIONS</b> |                                      |                                      |                                      |                                      |                     |                |                               |
| 5451 BOOKS                         | \$778                                | \$1,030                              | \$0                                  | \$0                                  | (\$1,030)           | -100.00%       | \$0                           |
| 5452 SUBSCRIPTIONS                 | \$9,627                              | \$9,667                              | \$6,361                              | \$10,010                             | \$343               | 3.55%          | \$0                           |
| 5453 EDUCATION                     | \$6,729                              | \$7,900                              | \$5,579                              | \$8,475                              | \$575               | 7.28%          | \$0                           |
| 5454 DUES/MEMBERSHIPS              | \$8,818                              | \$9,155                              | \$5,913                              | \$7,170                              | (\$1,985)           | -21.68%        | \$0                           |
| 5455 CHECK CHARGES                 | \$1,917                              | \$0                                  | \$896                                | \$0                                  | \$0                 | 0.00%          | \$0                           |
| <b>TOTAL OPERATING EXPENSES</b>    | \$450,110                            | \$507,505                            | \$248,554                            | \$469,077                            | (\$38,428)          | -7.57%         | \$0                           |
|                                    | Post this total to<br>Col. (2) Ex. A | Post this total to<br>Col. (3) Ex. A | Post this total to<br>Col. (4) Ex. A | Post this total to<br>Col. (5) Ex. A | Col. (5) - (3)      | Col. (6) / (3) |                               |

**OKALOOSA COUNTY**

**DETAIL OF OPERATING CAPITAL OUTLAY**

**SCHEDULE III**

| OBJECT CODE                       | ACTUAL EXPENDITURES<br>2009-10       | APPROVED BUDGET<br>2010-11         | ACTUAL EXPENDITURES<br>03/31/11    | REQUEST<br>2011-12                 | INCREASE/(DECREASE) |               | AMOUNT APPROVED<br>2011-12 |
|-----------------------------------|--------------------------------------|------------------------------------|------------------------------------|------------------------------------|---------------------|---------------|----------------------------|
|                                   |                                      |                                    |                                    |                                    | AMOUNT              | %             |                            |
| (1)                               | (2)                                  | (3)                                | (4)                                | (5)                                | (6)                 | (6a)          | (7)                        |
| <b>60 CAPITAL OUTLAY:</b>         | \$0                                  | \$0                                | \$0                                | \$0                                | \$0                 | 0.00%         |                            |
| <b>64 MACHINERY AND EQUIPMENT</b> |                                      |                                    |                                    |                                    |                     |               |                            |
| 6451 E.D.P.                       | \$7,234                              | \$0                                | \$0                                | \$0                                | \$0                 | 0.00%         | \$0                        |
| 6452 OFFICE FURNITURE             | \$15,608                             | \$0                                | \$0                                | \$0                                | \$0                 | 0.00%         | \$0                        |
| 6453 OFFICE EQUIPMENT             | \$0                                  | \$0                                | \$0                                | \$0                                | \$0                 | 0.00%         | \$0                        |
| 6454 VEHICLES                     | \$32,299                             | \$30,000                           | \$0                                | \$0                                | (\$30,000)          | -100.00%      | \$0                        |
| <b>66 BOOKS</b>                   | \$0                                  | \$0                                | \$0                                | \$0                                | \$0                 | 0.00%         | \$0                        |
| <b>68 INTANGIBLE ASSETS</b>       | \$0                                  | \$0                                | \$0                                | \$0                                | \$0                 | 0.00%         | \$0                        |
| <b>TOTAL CAPITAL OUTLAY</b>       | \$55,141                             | \$30,000                           | \$0                                | \$0                                | (\$30,000)          | -100.00%      | \$0                        |
|                                   | Post this total to<br>Col. (2) Ex. A | Post this total to<br>Col (3) Ex A | Post this total to<br>Col (4) Ex A | Post this total to<br>Col (5) Ex A | Col (5) - (3)       | Col (6) / (3) |                            |

OKALOOSA COUNTY

OPERATING CAPITAL OUTLAY (CONT.)  
DETAIL OF EQUIPMENT REQUESTED

SCHEDULE III A

INSTALLMENT PURCHASES

| ITEM | TOTAL CONTRACT COST | MONTH AND YEAR PURCHASED | LENGTH OF CONTRACT | REQUEST 2011-12 |
|------|---------------------|--------------------------|--------------------|-----------------|
|      |                     |                          |                    |                 |
|      |                     |                          |                    |                 |
|      |                     |                          |                    |                 |
|      |                     |                          |                    |                 |
|      |                     |                          |                    |                 |
|      |                     |                          |                    |                 |
|      |                     |                          |                    |                 |
|      |                     |                          |                    |                 |
|      |                     |                          |                    |                 |

| ITEM | UNIT PRICE | QUANTITY | REPLACE | NEW | REQUEST 2011-12 |
|------|------------|----------|---------|-----|-----------------|
|      |            |          |         |     |                 |
|      |            |          |         |     |                 |
|      |            |          |         |     |                 |
|      |            |          |         |     |                 |
|      |            |          |         |     |                 |
|      |            |          |         |     |                 |
|      |            |          |         |     |                 |
|      |            |          |         |     |                 |
|      |            |          |         |     |                 |

**OKALOOSA COUNTY**

**DETAIL OF NON-OPERATING**

**SCHEDULE IV**

| OBJECT CODE                | ACTUAL EXPENDITURES 2009-10 | APPROVED BUDGET 2010-11           | ACTUAL EXPENDITURES 03/31/11 | REQUEST 2010-12 | INCREASE/(DECREASE)              |                | AMOUNT APPROVED 2011-12 |
|----------------------------|-----------------------------|-----------------------------------|------------------------------|-----------------|----------------------------------|----------------|-------------------------|
|                            |                             |                                   |                              |                 | AMOUNT                           | %              |                         |
| (1)                        | (2)                         | (3)                               | (4)                          | (5)             | (6)                              | (6a)           | (7)                     |
| 90 NON-OPERATING           |                             |                                   |                              |                 |                                  |                |                         |
| 91 EDP CONTRACT RESERVE    |                             | \$0                               |                              | \$0             | \$0                              | 0.00%          | \$0                     |
| 92 OTHER CONTRACT RESERVE  |                             | \$0                               |                              | \$0             | \$0                              | 0.00%          | \$0                     |
| 93 SPECIAL CONTINGENCY     |                             | \$0                               |                              | \$0             | \$0                              | 0.00%          | \$0                     |
| 94 EMERGENCY CONTINGENCY   |                             | \$5,000                           |                              | \$5,000         | \$0                              | 0.00%          | \$0                     |
| <b>TOTAL NON-OPERATING</b> |                             | \$5,000                           |                              | \$5,000         | \$0                              | 0.00%          | \$0                     |
|                            |                             | Post this total to Col. (3) Ex. A |                              |                 | Post this total to Col. (5) Ex A | Col. (5) - (3) | Col. (6) / (3)          |



## OKALOOSA COUNTY

## JUSTIFICATION SHEET

| OBJECT CODE  |                         | SCHEDULE    | AMOUNT<br>OF INCREASE<br>(DECREASE) | JUSTIFICATION   |
|--------------|-------------------------|-------------|-------------------------------------|---|
| NUMBER       | NAME                    |             |                                     |   |
| 11           | Official                | \$125,108   | \$0                                 | Per ACIR includes \$2,000 salary supplement for completion of certification program   |
| 12           | Employee (Regular)      | \$1,689,360 | \$37,285                            | Pos # 24 reclassified and funded. Pos# 22 reclassified. See attached documentation.   |
| 13           | Employees (Temp)        | \$6,653     | \$55                                | Increase in FL minimum wage   |
| 14           | Overtime                | \$0         | \$0                                 |   |
| 15           | Special Pay             | \$10,000    | (\$1,506)                           |   |
| 2152         | FICA Regular            | \$138,946   | \$2,751                             | Increase due to funding pos #24 and reclassing pos #22.   |
| 2153         | Temporary               | \$0         | \$0                                 |   |
| 2251         | Retirement Official     | \$7,519     | (\$7,807)                           | Elected Official calculated at Blended Rate for DROP at 6.01% per Florida Retirement System.  |
| 2252         | Retirement Employee     | \$67,173    | (\$63,283)                          | Blended Rate for Regular Emp 5.33% per Florida Retirement System.   |
| 2253         | Retirement SMS/SES      | \$13,099    | (\$1,254)                           | Blended Rate for SMSC 8.82% per Florida Retirement System.  |
| 2254         | Retirement - DROP       | \$17,262    | (\$26,882)                          | Blended Rate for DROP 6.01% per Florida Retirement System.  |
| 23           | Life & Health Insurance | \$334,880   | \$12,880                            | Per Risk Management, increase of 4% due to health insurance rate change.  |
| 24           | Workers Comp            | \$26,710    | (\$1,290)                           |   |
| 25           | Unemployment Comp       | \$0         | \$0                                 |   |
| 3151         | EDP                     | \$148,888   | (\$3,697)                           |   |
| 3153         | Mapping                 | \$0         | \$0                                 |   |
| 3154         | Legal                   | \$79,500    | \$2,750                             | Increased activity in our Exemption Investigations Dept. has the potential to impact our legal fees in addition to current legal cases. |
| 3159         | Other prof services     | \$950       | (\$870)                             |   |
| 32           | Accounting & Audit      | \$5,100     | (\$400)                             |   |
| 34           | Other Contractual       | \$1,444     | \$0                                 |   |
| <b>TOTAL</b> |                         |             | <b>(\$51,269)</b>                   |   |

**OKALOOSA COUNTY**

**JUSTIFICATION SHEET**

| OBJECT CODE  |                             | SCHEDULE | AMOUNT OF INCREASE (DECREASE) | JUSTIFICATION  |
|--------------|-----------------------------|----------|-------------------------------|--|
| NUMBER       | NAME                        |          |                               |  |
| 40           | Travel                      | \$16,562 | (\$79)                        | See Worksheet  |
| 41           | Communications              | \$6,800  | \$1,820                       | New telephones for Customer Service and Investigations with wireless headsets.     |
| 4251         | Postage                     | \$11,696 | (\$1,099)                     | See Worksheet  |
| 43           | Utilities                   | \$0      | \$0                           |  |
| 4451         | Rental & Lease Office Equip | \$2,607  | \$107                         | Postage meter for Crestview office due to increase in mail volume at that location |
| 4452         | Rental & Lease Vehicles     | \$0      | \$0                           |  |
| 4453         | Rental & Lease Office Space | \$0      | \$0                           |  |
| 4454         | Rental & Lease EDP          | \$0      | \$0                           |  |
| 45           | Insurance & Surety          | \$45,770 | (\$18,574)                    |  |
| 4651         | Repair & Maint Office Equip | \$2,850  | (\$425)                       |  |
| 4652         | Repair & Maint Vehicle      | \$12,785 | (\$1,840)                     |  |
| 4653         | Repair & Maint Office Space | \$12,020 | (\$240)                       |  |
| 4654         | Repair & Maint EDP          | \$27,410 | (\$103)                       |  |
| 47           | Printing & Binding          | \$6,225  | (\$1,525)                     |  |
| 4951         | Legal Advertisements        | \$6,800  | (\$550)                       |  |
|              |                             |          |                               |  |
|              |                             |          |                               |  |
|              |                             |          |                               |  |
| <b>TOTAL</b> |                             |          | <b>(\$22,508)</b>             |  |

**OKALOOSA COUNTY**

**JUSTIFICATION SHEET**

| OBJECT CODE  |                            | SCHEDULE | AMOUNT OF INCREASE (DECREASE) | JUSTIFICATION                                    |
|--------------|----------------------------|----------|-------------------------------|--|
| NUMBER       | NAME                       |          |                               |  |
| 4959         | Other                      | \$750    | (\$250)                       |  |
| 5100         | Office Supplies            | \$27,265 | (\$17,356)                    |  |
| 5200         | Operating Supplies (Fuel)  | \$28,000 | \$6,000                       | Increase in fuel costs.                          |
| 5451         | Books                      | \$0      | (\$1,030)                     |  |
| 5452         | Subscriptions              | \$10,010 | \$343                         | Increase cost of several appraisal subscriptions |
| 5453         | Education                  | \$8,475  | \$575                         | See Worksheet                                    |
| 5454         | Dues / Membership          | \$7,170  | (\$1,985)                     |  |
|              |                            |          |                               |  |
| 6451         | EDP (Capital)              | \$0      | \$0                           |  |
| 6452         | Furniture (Capital)        | \$0      | \$0                           |  |
| 6453         | Office Equipment (Capital) | \$0      | \$0                           |  |
| 6454         | Vehicles (Capital)         | \$0      | (\$30,000)                    |  |
| 9300         | Special Contingency        | \$0      | \$0                           |  |
| 9400         | Emergency Contingency      | \$5,000  | \$0                           |  |
|              |                            |          |                               |  |
|              |                            |          |                               |  |
|              |                            |          |                               |  |
| <b>TOTAL</b> |                            |          | <b>(\$43,703)</b>             |  |





# TRAVEL WORKSHEET OKALOOSA COUNTY

## LOCAL TRAVEL

### FIELD TRAVEL:

| Number of Field Personnel | Office Owned Vehicles | County Owned Vehicles | Personal Vehicles | Total Miles for Per. Vehicles | Mileage Allowance | Flat Rate/ No. at Flat Rate | Total  |
|---------------------------|-----------------------|-----------------------|-------------------|-------------------------------|-------------------|-----------------------------|--------|
| 13                        | 13                    | 0                     | 0                 | 0                             | 0                 | 0                           | \$0.00 |

### ADMINISTRATIVE TRAVEL:

| Number of Adm. Personnel | Office Owned Vehicles | County Owned Vehicles | Personal Vehicles | Total Miles for Per. Vehicles | Mileage Allowance | Flat Rate/ No. at Flat Rate | Total  |
|--------------------------|-----------------------|-----------------------|-------------------|-------------------------------|-------------------|-----------------------------|--------|
| 4                        | 4                     | 0                     | 0                 | 0                             | 0                 | 0                           | \$0.00 |

**TOTAL LOCAL TRAVEL**

\$0

## MISCELLANEOUS TRAVEL

### SCHOOLS:

| Sponsor             | City    | No. Attending/<br>No. Days Each | Personal Vehicles | Mileage | Room Allowance | Per Diem | Total   |
|---------------------|---------|---------------------------------|-------------------|---------|----------------|----------|---------|
| IAAO                | Orlando | 9 / 5                           |                   |         | \$3,000        | \$2,151  | \$5,151 |
| IAAO - CEW          | Orlando | 1 / 3                           |                   |         | \$360          | \$164    | \$524   |
| Appraisal Institute | TBD     | 1 / 4                           |                   |         | \$480          | \$205    | \$685   |
|                     |         |                                 |                   |         |                |          | \$0     |
|                     |         |                                 |                   |         |                |          | \$0     |
|                     |         |                                 |                   |         | \$0            | \$0      | \$0     |
| <b>TOTAL</b>        |         | 11 / 12                         |                   |         |                |          | \$6,360 |

### CONFERENCES:

| Sponsor       | City        | No. Attending/<br>No. Days Each | Personal Vehicles | Mileage | Room Allowance | Per Diem | Total   |
|---------------|-------------|---------------------------------|-------------------|---------|----------------|----------|---------|
| FAPA Pre-Leg  | Tallahassee | 3 / 3                           |                   |         | \$1,080        | \$492    | \$1,572 |
| FAPA Post-Leg | Orlando     | 3 / 3                           |                   |         | \$1,080        | \$492    | \$1,572 |
| FAPA Annual   | Orlando     | 3 / 3                           |                   |         | \$1,080        | \$492    | \$1,572 |
| GIS SHRUG     | Tallahassee | 2 / 2                           |                   |         | \$480          | \$246    | \$726   |
| FCIAAO        | Lake Mary   | 6 / 3                           |                   |         | \$2,160        | \$984    | \$3,144 |
| <b>TOTAL</b>  |             | 17 / 14                         |                   |         |                |          | \$8,586 |

### OTHER:

| TYPE OF TRAVEL | Number of Trips | Mileage | Room Allowance | Per Diem | Total   |
|----------------|-----------------|---------|----------------|----------|---------|
| LEGISLATIVE    | 5               |         | \$600          | \$410    | \$1,010 |
| GENERAL        | 3               |         | \$360          | \$246    | \$606   |

**TOTAL MISCELLANEOUS TRAVEL**

\$16,562

**MOTOR POOL CHARGES**

\$0

**TOTAL TRAVEL REQUEST**

\$16,562

**POSTAGE WORKSHEET  
OKALOOSA COUNTY**

| Type Of Mail  | Number of Items | Postage Rate | Total          |
|---|-----------------|--------------|----------------|
| <b>MASS MAILINGS:</b>   |                 |              |                |
| Notices of Proposed Property Taxes*                           |                 |              |                |
| Personal Property Tax Returns*                                | 0               | \$0.000      | \$0            |
| Agricultural Class of Lands*                                  | 0               | \$0.000      | \$0            |
| Final Notices   |                 |              |                |
| Receipts  |                 |              |                |
| <b>EXEMPTIONS:</b>  |                 |              |                |
| Renewal Application for Homestead* and related Tax Exemptions | 0               | \$0.000      | \$0            |
| Final Notices   |                 |              |                |
| Receipts  |                 |              |                |
| Agricultural Exemption Denials/Approvals                      | 150             | \$0.440      | \$66           |
| Agricultural Exemption Applications                           | 150             | \$0.440      | \$66           |
| <b>Other: (Specify Type)</b>                                  |                 |              |                |
| Intent to Deny Homestead Exemption                            | 1,132           | \$0.440      | \$498          |
| Military HX Applications/Acceptance Ltrs                      | 2,455           | \$0.440      | \$1,080        |
| Senior Exemption/Check File                                   | 2,150           | \$0.440      | \$946          |
| Pre-File Letters for Homestead                                | 2,400           | \$0.440      | \$1,056        |
| Senior Denial Letters   | 250             | \$0.440      | \$110          |
| Official Denial of Homestead Exemption                        | 400             | \$0.440      | \$176          |
| Official Denial of Homestead Exemption                        | 10              | \$5.590      | \$56           |
| Sales Verification and Income Request                         | 3,200           | \$0.580      | \$1,856        |
| Liens   | 110             | \$5.590      | \$615          |
| TPP Reminder Cards  | 1,500           | \$0.400      | \$600          |
| <b>*TOTAL MASS MAILINGS</b>                                   |                 |              | <b>\$7,125</b> |
| <b>GENERAL CORRESPONDENCE</b>                                 |                 |              |                |
| Office  | 8,000           | \$0.440      | \$3,520        |
| Office-Certified Mail   | 50              | \$5.590      | \$280          |
| Tangible Personal Property Dept                               | 1,754           | \$0.440      | \$772          |
| <b>TOTAL GENERAL CORRESPONDENCE</b>                           |                 |              | <b>\$4,571</b> |

**TOTAL POSTAGE REQUEST** (Enter on line 4251, Column (5), Schedule II) **\$11,696**

Explain the method you intend to utilize for the Annual Application for Exemption(s) and the Receipt(s) for the fiscal year 2011-2012 (i.e. Automatic homestead renewal - mailing of receipts, etc.).  
Automatic homestead renewal

\*The Board of County Commissioners pays for the the mailing of TRIM NOTICES per s.200.069 FS.

**\*NOTE: If the mailing of the Notices of Proposed Property Taxes (TRIM) is included in the mass mailing calculation, please include a letter of authorization from your County Commission. This letter is needed since this mailing should be at the expense of the Board of County Commissioners as perscribed by s.200.069, Florida Statutes. If the postage expense for TRIM Notices is to be a direct reimbursement to you by the county, do not include it in the total postage request.**









**SUMMARY OF  
REDUCTIONS REQUEST**

PROPERTY APPRAISER

| APPROPRIATION<br>CATEGORY                 |                    | BUDGET<br>REQUEST<br>2011-12 | Reductions Requested by<br>the COUNTY |             | Reductions Reflected in<br>REQUEST |              |
|---|--------------------|------------------------------|---------------------------------------|-------------|------------------------------------|--------------|
|   |                    |                              |                                       |             | AMOUNT                             | %            |
| PERSONAL SERVICES<br>(Sch. 1-1A)          | 2,485,761          | 2,436,709                    | 0                                     | 0.0%        | (49,052)                           | -2.0%        |
| OPERATING EXPENSES<br>(Sch. II)           | 507,505            | 469,077                      | 0                                     | 0.0%        | (38,428)                           | -7.6%        |
| OPERATING<br>CAPITAL OUTLAY<br>(Sch. III) | 30,000             | 0                            | 0                                     | 0.0%        | (30,000)                           | -100.0%      |
| NON-OPERATING<br>(Sch. IV)                | 5,000              | 5,000                        | 0                                     | 0.0%        | 0                                  | 0.0%         |
| <b>TOTAL EXPENDITURES</b>                 | <b>\$3,028,266</b> | <b>\$2,910,786</b>           | <b>\$0</b>                            | <b>0.0%</b> | <b>(\$117,480)</b>                 | <b>-3.9%</b> |
| <b>NUMBER OF POSITIONS</b>                | 39                 | 39                           |                                       | 0.0%        | 0                                  | 0.0%         |

The Okaloosa BOCC did not request any funding reductions of the Property Appraiser. The Board did express an appreciation of the Property Appraiser for a consistent conservative approach to budgeting and were confident that the Property Appraiser would eliminate costs where possible.

*\* Please use the second tab to clarify any deviation in the reductions requested by the county and the reductions in this request.*

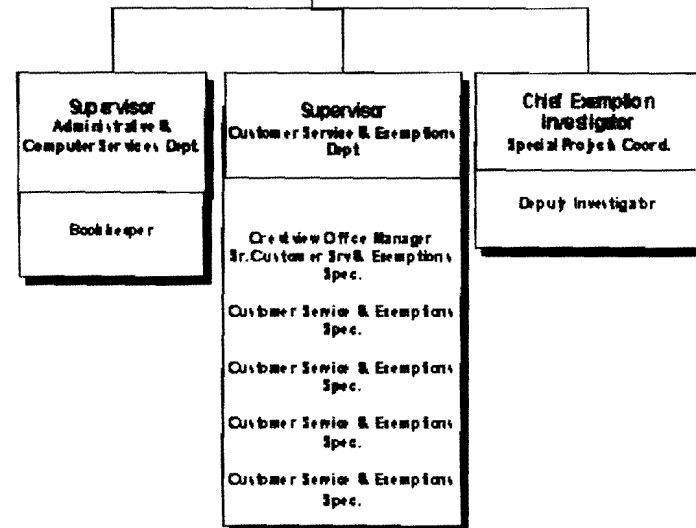
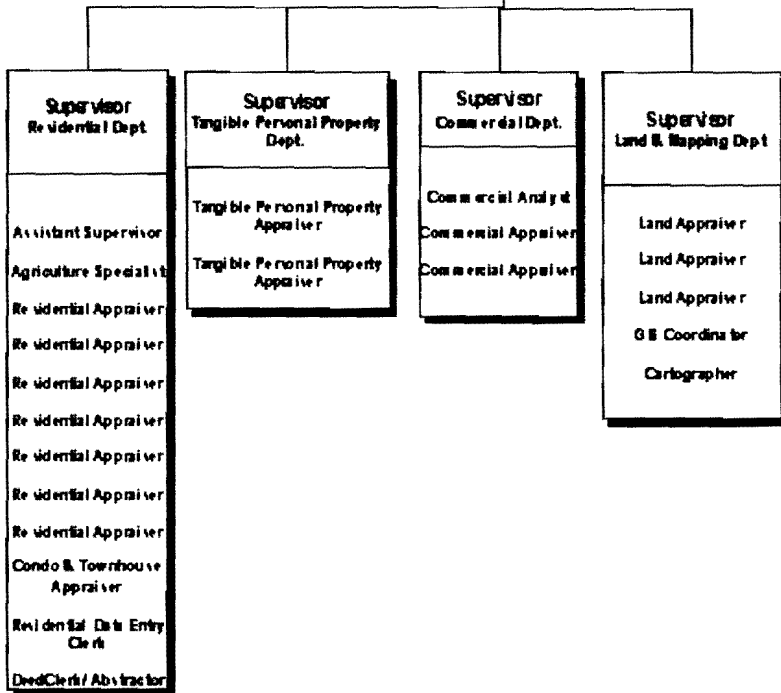
# CITIZENS OF OKALOOSA COUNTY

**Property Appraiser**

**Director of Appraisals**

**Director of Administration**

**Supervisor  
Administration/Finance**



**June 1, 2011**