

**OKALOOSA COUNTY  
EMERGENCY MEDICAL SERVICES  
STANDARD OPERATING PROCEDURE**

---

<b>Title:</b>	<b>Physician at the Scene/Medical Direction</b>
<b>Policy:</b>	<b>441.00</b>
<b>Purpose:</b>	<b>To provide guidelines for prehospital personnel who encounter a physician at the scene of an emergency.</b>

---

**Policy:**

The prehospital provider has a duty to respond to an emergency, initiate treatment, and conduct an assessment of the patient to the extent possible.

A physician who voluntarily offers or renders medical assistance at an emergency scene is generally considered a "Good Samaritan." However, once a physician initiates treatment, he/she may feel a physician-patient relationship has been established.

Good patient care should be the focus of any interaction between prehospital care providers and the physician.

See sample note to physician at the scene and algorithm below.

**NOTE TO PHYSICIANS ON INVOLVEMENT WITH EMS PROVIDERS**

THANK YOU FOR OFFERING YOUR ASSISTANCE.

The prehospital personnel at the scene of this emergency operate under standard policies, procedures, and protocols developed by their Medical Director. The drugs carried and procedures allowed are restricted by law and written protocols.

After identifying yourself by name as a physician licensed in the State of Florida and providing identification, you may be asked to assist in one of the following ways:

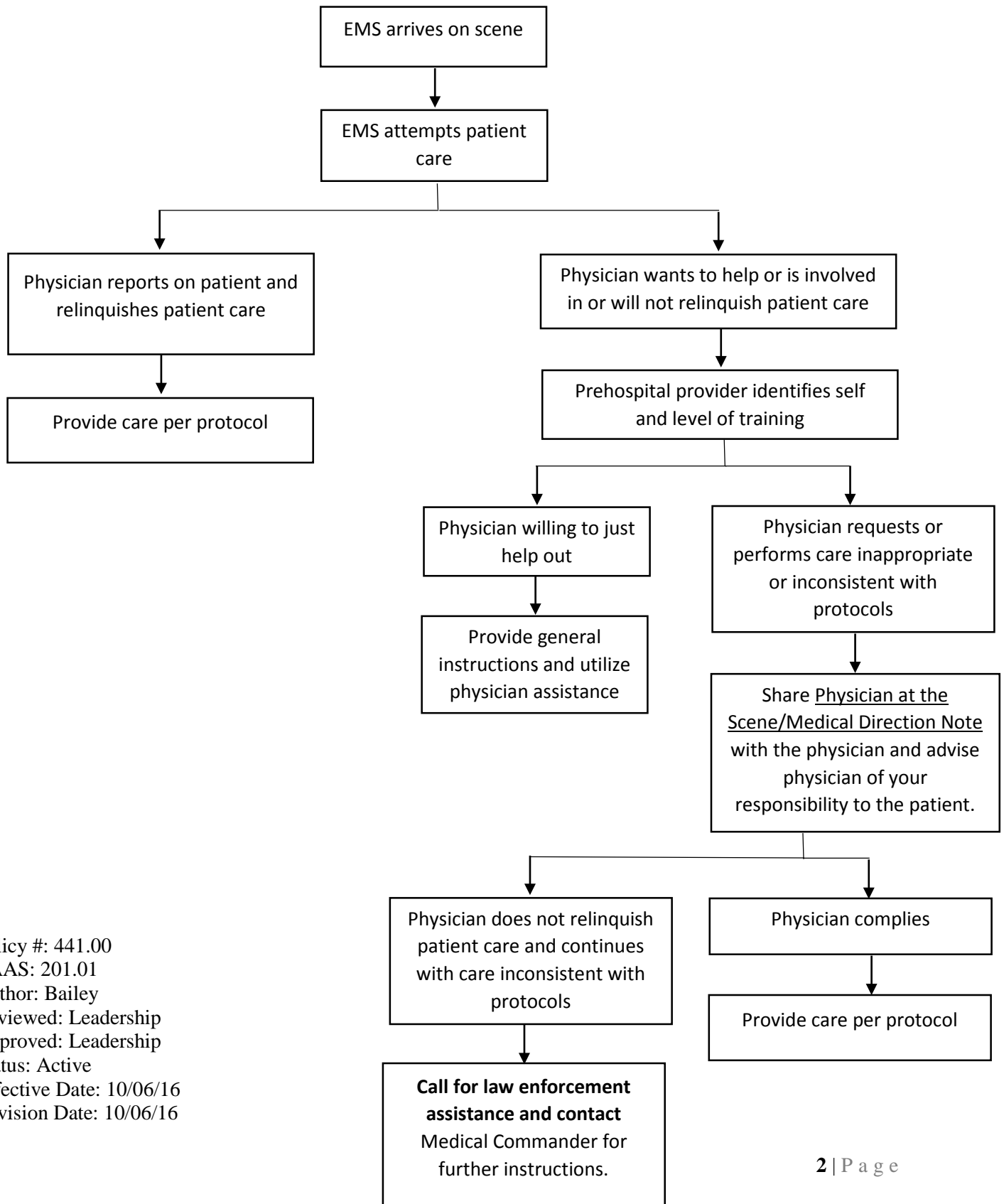
1. Offer your assistance or suggestions, but the prehospital care providers will remain under the medical control of their base physician, or
2. With the assistance of the prehospital care providers, talk directly to the base physician and offer to direct patient care and accompany the patient to the receiving hospital. Prehospital care providers are required to obtain an order directly from the base physician for this to occur.

THANK YOU FOR OFFERING YOUR ASSISTANCE DURING THIS EMERGENCY.

---

Medical Director

**OKALOOSA COUNTY  
EMERGENCY MEDICAL SERVICES  
STANDARD OPERATING PROCEDURE**



Policy #: 441.00  
 CAAS: 201.01  
 Author: Bailey  
 Reviewed: Leadership  
 Approved: Leadership  
 Status: Active  
 Effective Date: 10/06/16  
 Revision Date: 10/06/16